

WEED MAPPING

Slovenia, Slovakia, Czech Republic

Slovenia

Urban Šilc

- Institute of Biology, Ljubljana
- weed vegetation in Slovenia and former Yugoslavia (together with colleagues from Belgrade University)
- Turboveg database (about 4500 relevés)
- floristic composition of weed vegetation in dependence of temporal and spatial gradients
- neophytes and their appearance in different habitats
- Database of vegetation relevés from Slovenia

Slovakia

Ing. Štefan Tóth, Ph.D.

- Institute of Agroecology in Michalovce
- 1997-2004

Slovakia

Prof. RNDr. Pavol Eliáš, CSc.

- Department of Ecology, FESRD SUA Nitra

Slovakia

Ing. Pavol Eliáš, Ph.D.

- Department of Botany, FAFR SUA Nitra
- rare and invasive weed species
- distribution of individual species (not communities)

Slovakia

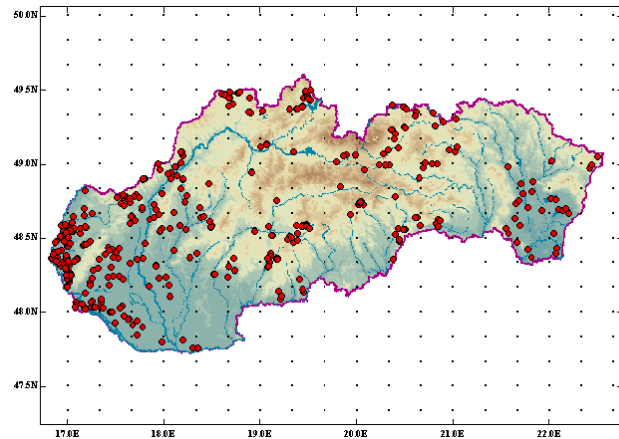
Ing. Štefan Týr, Ph.D.

- Department of Sustainable Agriculture and Herbology, FAFR SUA Nitra
- since 1994

Slovakia

RNDr. Jana Májeková

- Department of Geobotany, Institute of Botany SAS, Bratislava
- whole territory of Slovakia
- cereals, root crops, fodder crops, winter rape, stubble, fallow
- Turboveg database
- 2002-2008: 508 relevés
- Central database of
- phytocenological data in Slovak Republic



Slovakia

Ing. Josef Smatana, Ph.D.

- Department of Sustainable Agriculture and Herbology, FAFR SUA Nitra

Czech Republic

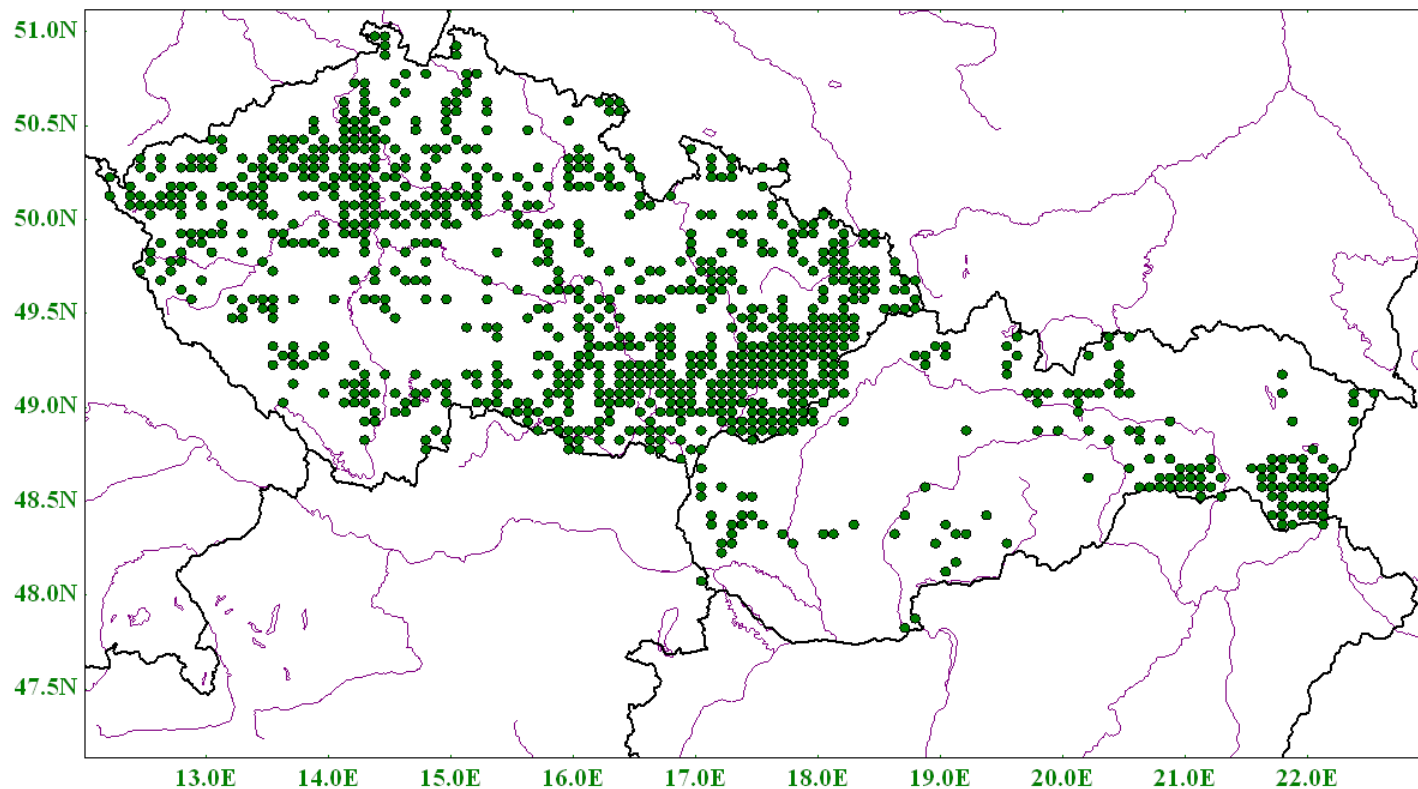
RNDr. Zdenka Lososová

- Masaryk University in Brno
- weed communities (Southern Moravia)
- mapping of vegetation in orchards and vineyards
- Turboveg database
- Czech National Phytosociological Database

Czech Republic

RNDr. Zdenka Lososová

- more than 3000 relevés of weed vegetation



Czech Republic

Ing. Jan Winkler, Ph.D.

- Department of Agrosystems and Bioclimatology, Mendel University in Brno

Czech Republic

Ing. Vít Joza

- Department of Biological Disciplines,
University of South Bohemia in České
Budějovice

Czech Republic

Czech University of Life Sciences

- Department of Agroecology and Biometeorology
- Ing. Pavel Hamouz, Ph.D.
- Ing. Josef Holec, Ph.D.
- Ing. Luděk Tyšer, Ph.D.

Czech Republic

Crop Research Institute in Prague

- Ing. Jan Mikulka, CSc.
- Ing. Jan Štrobach

- rare and invasive species
- weed mapping of perennial grasslands