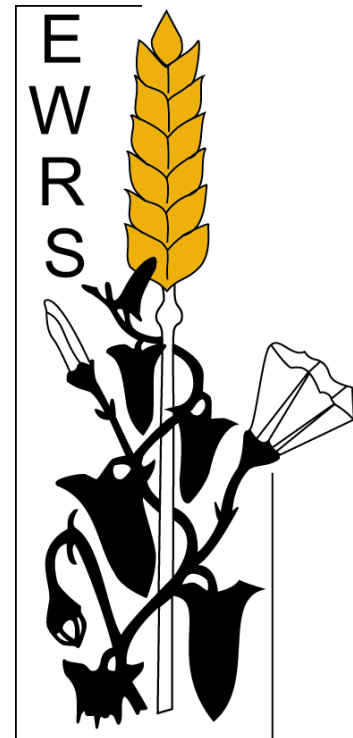


European Weed Research Society

Bärbel Gerowitt

President 2016/2017



The European Framework

- History in agricultural land use
- Diversity in agro-systems
- Diversity in weed control industries
- Diversity in languages

The European Framework

- History in agricultural land use
- Diversity in agro-systems
- Diversity in weed control industries
- Diversity in languages

EWRS founded in 1975, tri-lingual until 1999

Mission

Research on weed biology and ecology

Research on weed control and management

Mission

Research on weed biology and ecology

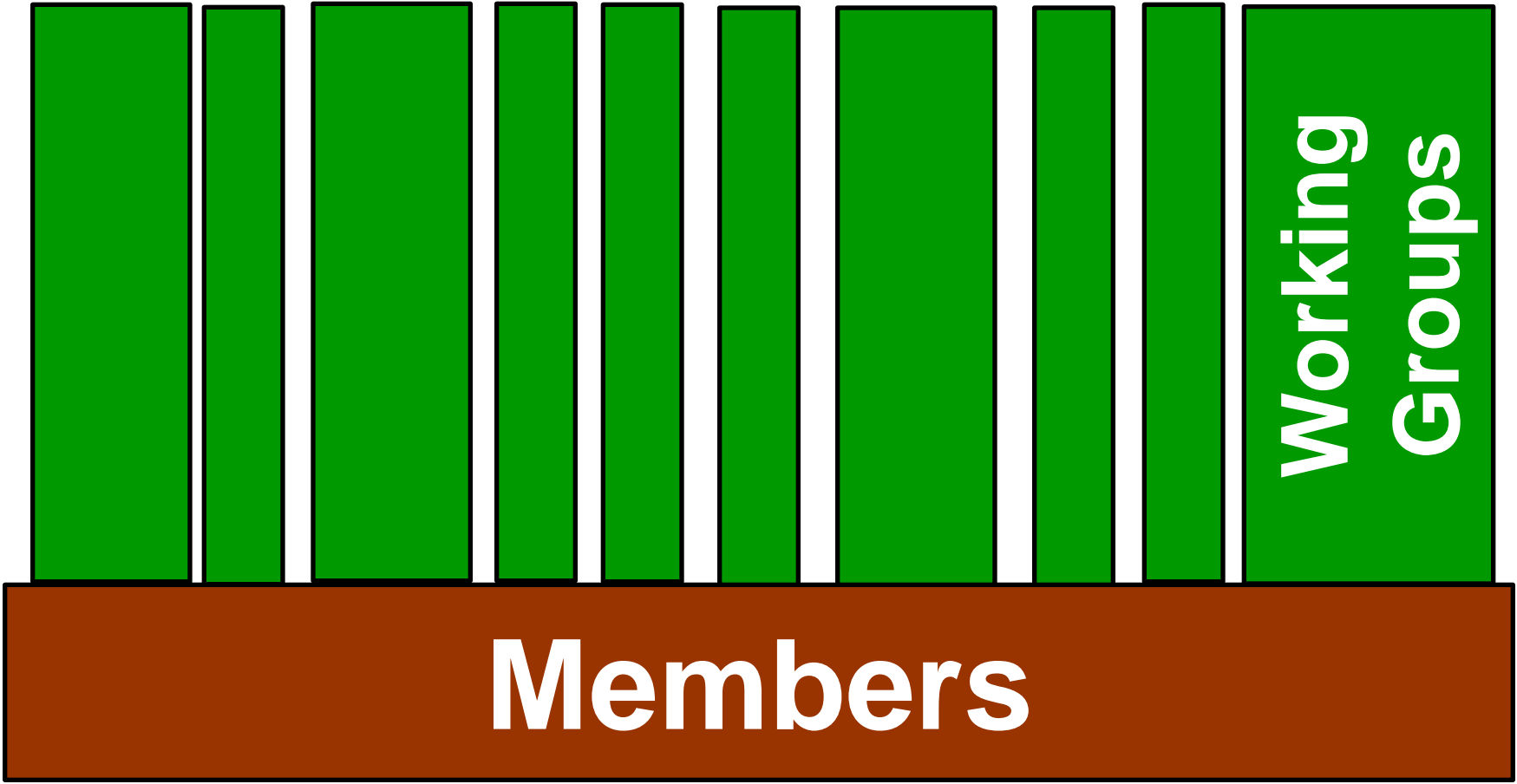
Research on weed control and management

What is a weed?

- Plants growing where they are not desired
- Plants growing spontaneously in a habitat modified by humans
- Plants whose virtues still not yet been discovered
- The opposition of nature against the government of gardeners (Oskar Kokoscha)

Members

**~ 400 Members,
50 countries Europe and World**



Pillars of the EWRS are the Working Groups

- Physical and cultural weed control
 - Optimising herbicide use in the context of IWM
 - Crop-weed interactions
 - Herbicide resistance
 - Herbicide resistant cultivars
 - Germination and early growth
 - Weeds and biodiversity
 - Invasive weeds
 - Parasitic weeds
 - Weeds in vegetable systems
 - Weed management under arid and semi-arid conditions
 - Site-specific weed management
 - Weed mapping
-
- Education and Training

In foundation

- Economics views on weeds

**Open window for other
societies and non-EWRS
members**

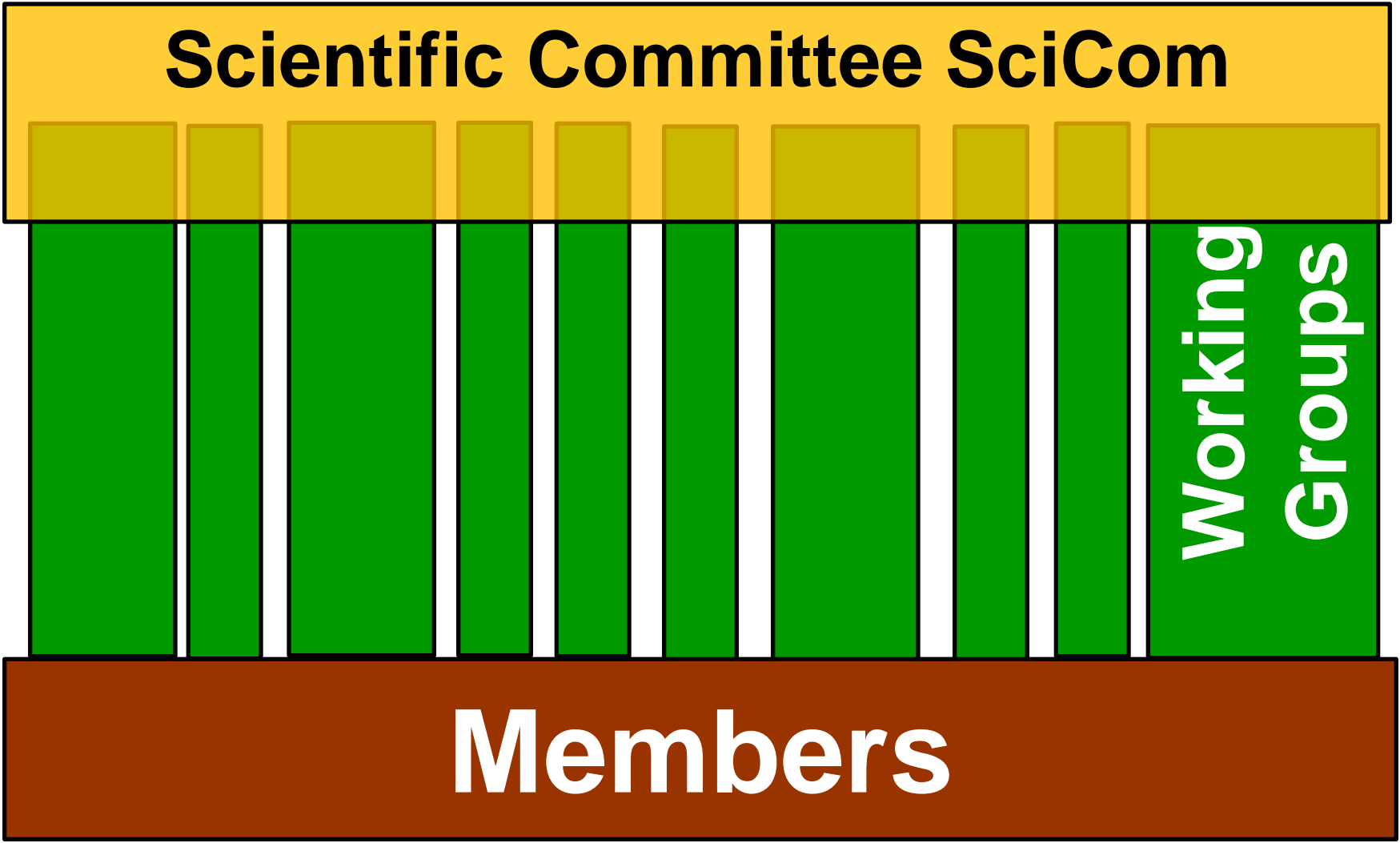
**Working
Groups**

Members

Scientific Committee SciCom

Working
Groups

Members



Scientific Committee SciCom

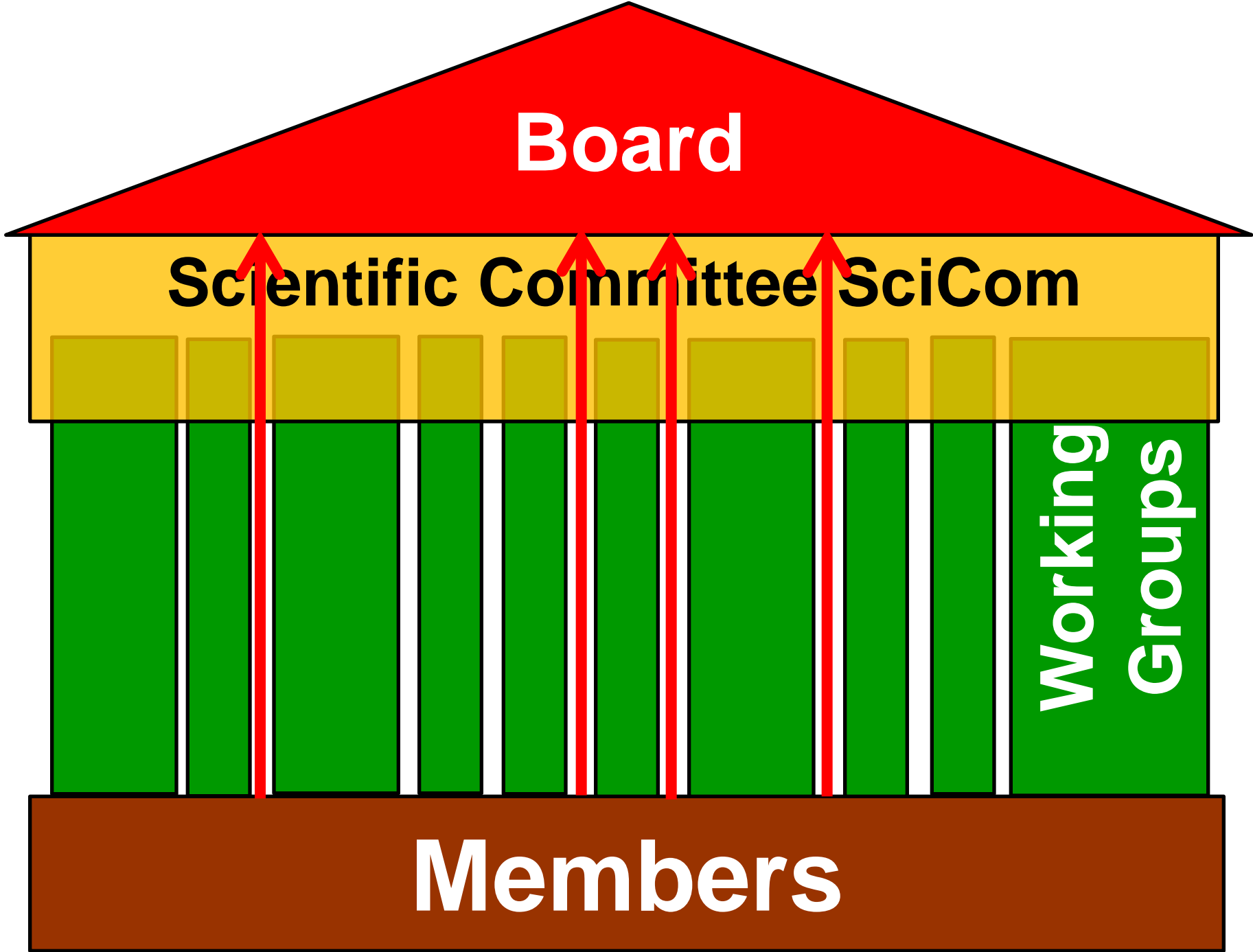
- **All Working Group Coordinators (or deputies)**
- **Prepare decisions about scientific content**
- **Hold workshops and meetings**
- **Prepare and assist in conference**
- **Chaired by the Vice-President**
- **Managed by Scientific Secretary**

Board

Scientific Committee SciCom

**Working
Groups**

Members



Board

Scientific Committee SciCom

**Working
Groups**

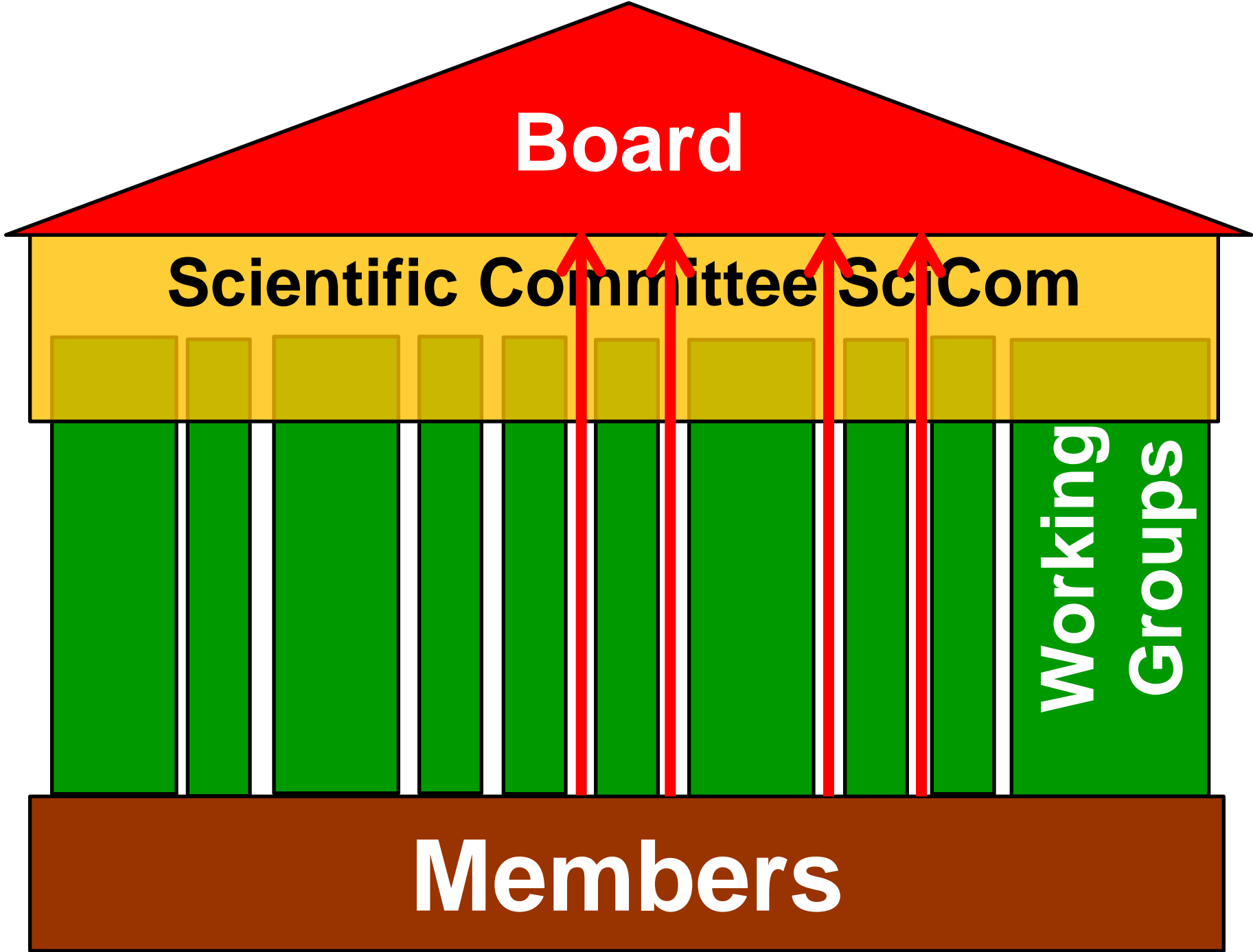
Members

Board

Manage and decide all Society items

Elections all two years

- **President, Secretary**
- **Vice President, Scientific Secretary**
- **Treasurer**
- **Past President, Chairperson of Editorial Board WR**
- **Four additional members**

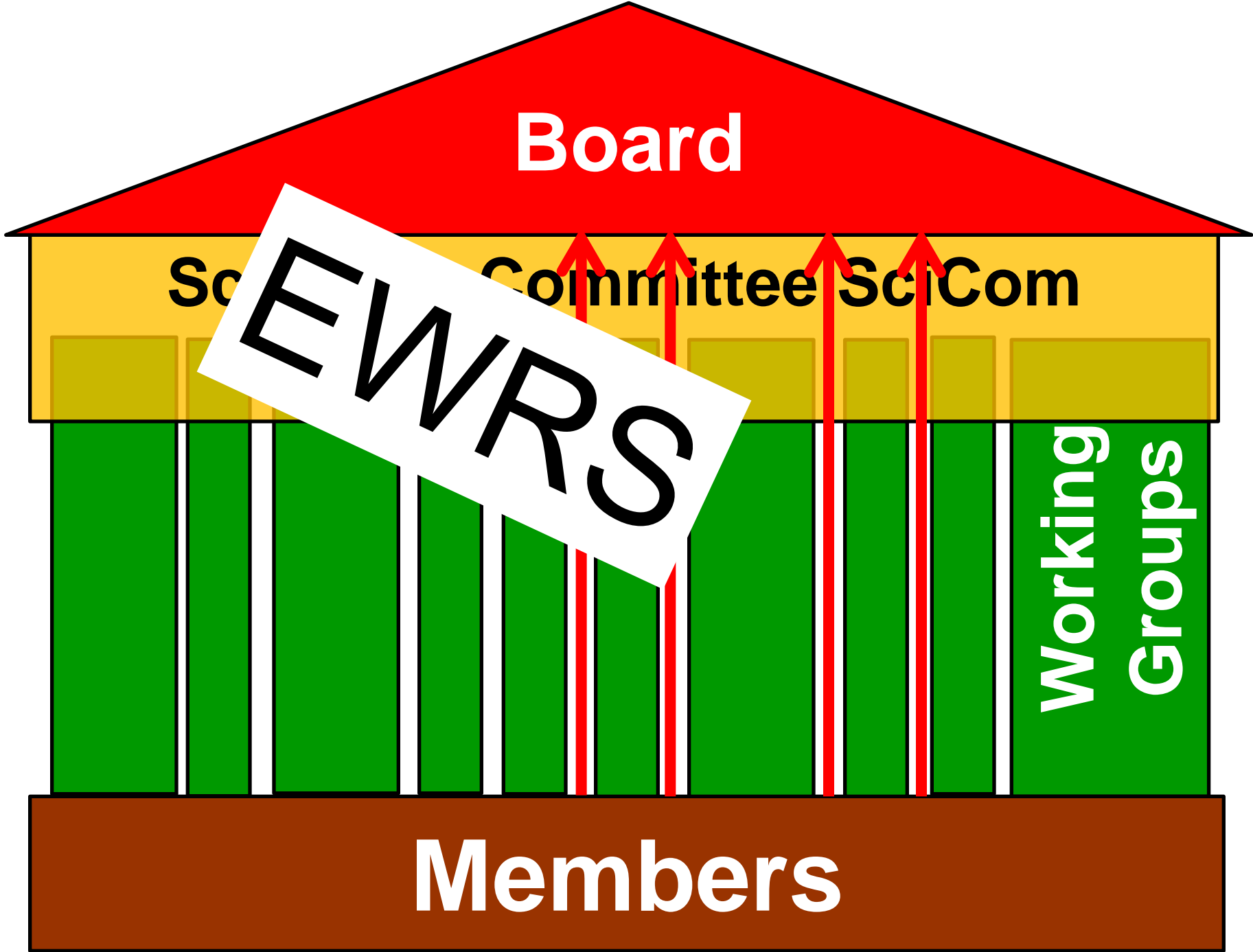


Board

Scientific Committee SciCom

**Working
Groups**

Members



Board

Sci Committee SciCom

EWRS

Working
Groups

Members

Board

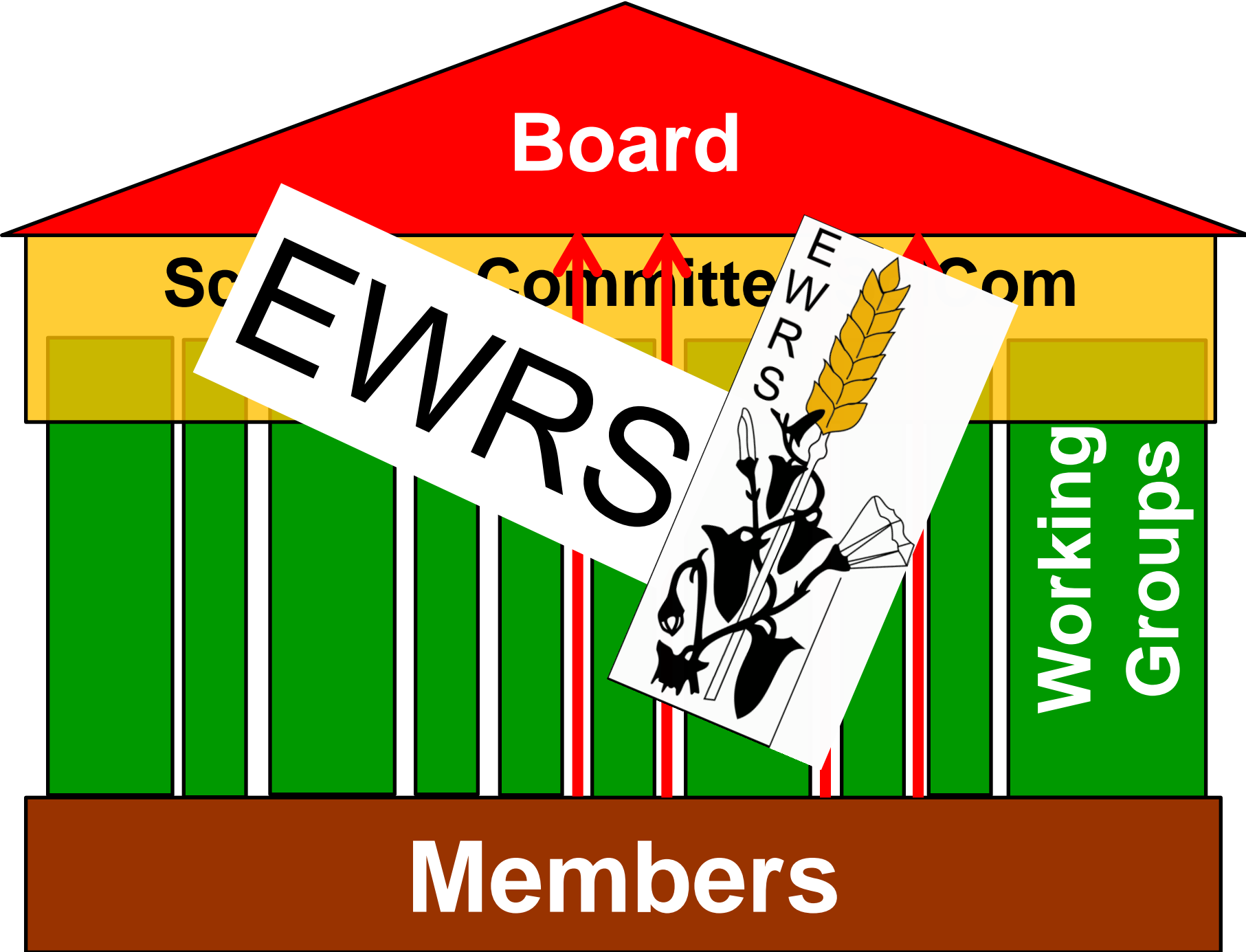
So Committee Com

EWVRS

EWVRS

**Working
Groups**

Members



EWRS



www.ewrs.org

EWRS



JOURNAL



WEED RESEARCH
An International Journal of Weed Biology,
Ecology and Vegetation Management

Most Downloaded Articles

- [Trafficking of molecules between parasitic plants and their hosts](#)
- [RAPD, karyology and selected morphological variation in a model grass, *Brachypodium distachyon*](#)
- [Potential uses of small unmanned aircraft systems \(UAS\) in weed research](#)
- [Importance of distribution function selection for hydrothermal time models of seed germination](#)
- [Response of *Lolium perenne* to repeated flame treatments with various doses of propane](#)

European Weed Research Society

Homepage Latest Issue

Sample Issue Submit your paper

EWRS-Conference

2013 Samsun/Turkey

2015 Montpellier/France

2018 Ljubljana/Slovenia

Workshops of Working Groups

Different style/size, 4 - 5 per year

2016, September, Riga,

2017: 5 workshops, follow
announcement on web-site

Support for **early career scientists** to participate
in conferences and
workshops

www.ewrs.org

EWRS



JOURNAL



WEED RESEARCH
An International Journal of Weed Biology,
Ecology and Vegetation Management

Most Downloaded Articles

- [Trafficking of molecules between parasitic plants and their hosts](#)
- [RAPD, karyology and selected morphological variation in a model grass, *Brachypodium distachyon*](#)
- [Potential uses of small unmanned aircraft systems \(UAS\) in weed research](#)
- [Importance of distribution function selection for hydrothermal time models of seed germination](#)
- [Response of *Lolium perenne* to repeated flame treatments with various doses of propane](#)

European Weed Research Society

Homepage Latest Issue
Sample Issue Submit your paper

EWRS-Conference

2013 Samsun/Turkey

2015 Montpellier/France

2018 Ljubljana/Slovenia

Workshops of Working Groups

Different style/size, 4 - 5 per year

2016, September, Riga,

2017: 5 workshops, follow
announcement on web-site

Support for **early career scientists** to participate
in conferences and
workshops

Weed friends all over Europe

EWRS



JOURNAL



Most Downloaded Articles

- [Trafficking of molecules between para...](#)
- [RAPD, karyology and taxonomic...](#)
- [Potential of weed resistance...](#)
- [Importance of models of...](#)
- [Response of various doses...](#)



European
Weed
Research
Society

Home

Sample

EWRS Conference

by
ance

/Slovenia

Join !

Thank you !

Workshops

Different styles

2016, September

2017: 5 workshops

announcement of

early career

participate

ferences and

workshops

Weed friends all over Europe