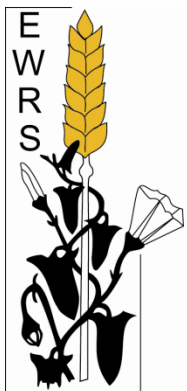


---

**EUROPEAN WEED RESEARCH SOCIETY**Secretary

Dr. Andrej SIMONČIČ  
Agricultural Institute of Slovenia  
Hacquetova 17  
SI-1000 Ljubljana  
[andrej.simoncic@kis.si](mailto:andrej.simoncic@kis.si)

Newsletter Editor

Dr. Camilla MOONEN  
Land Lab/Agroecology  
Institute of Life Sciences  
Scuola Superiore Sant'Anna  
Piazza Martiri della Libertà, 33  
IT-56127 Pisa  
[newsletter@ewrs.org](mailto:newsletter@ewrs.org)  
[moonen@sssup.it](mailto:moonen@sssup.it)



Flowers *Silene vulgaris* (Moench) Garcke-SILVU. *S. vulgaris* is a perennial weed found in wheat and perennial crops in Greece. It originates from the Mediterranean area and W Asia but is now found in Europe, N. America, Australia and New Zealand. It is considered as a noxious weed in some countries. Characteristics: its balloon-like inflated calyx with reddish veins. Inside this Newsletter you can find a report of the Greek Weed Science Society with a picture of *S. vulgaris* seeds. (Picture and text: Prof. Petros Lolas).

---

---

---

## CONTENTS

---

Contents .....	2
From the Board.....	3
President's Message .....	3
Report to the Editorial Board of Weed Research for 2011.....	4
Scientific Committee and Working Groups.....	8
EWRS Working Group on Education and Training .....	8
Member contributions.....	9
Weed Science Society of Greece - Weed Science in Greece.....	9
Histology of <i>Cassia obtusifolia</i> .....	11
Prize winning poster .....	12
Call for Conferences .....	14
The VI <sup>th</sup> International Weed Science Congress.....	14
1 <sup>st</sup> International RHEA Conference: "Applications of automated systems and robotics for crop protection in sustainable precision agriculture" .....	15
4 <sup>th</sup> ENDURE Summer School 'Agroecological Engineering for Crop protection' .....	16
International Conference Global Herbicide Resistance Challenge 2013.....	17
Upcoming Conferences and Workshops .....	18
Editorial.....	20
EWRS Board 2012–2013 .....	20
EWRS Scientific Committee 2012-2013.....	21
Instructions for Contributors.....	22
Charges for Job Advertising in the Newsletter .....	22

---

## FROM THE BOARD

---

### PRESIDENT'S MESSAGE



Dear colleagues and friends,

springtime is a period in which weed scientists are busy with field work, but let us not forget that this year a major event is going to take place: the 6<sup>th</sup> International Weed Science Congress (IWSC), scheduled in Hangzhou, PR China, from 17 to 22 June ([www.iwss.info](http://www.iwss.info)). As usual, our Society is highly committed to the success of this event, through the participation of some key officers as session (co)organisers and as provider of subsidies to young research fellows. In particular, I want to draw your attention to the course that Jon Marshall – the Editor-in-Chief of *Weed Research* – will give at Hangzhou. Please read on at page 15 of this Newsletter issue.

As to subsidies, I am happy to communicate that we will allocate 10,000 Euro to partially subsidise young weed researchers, which makes us – as usual – the most generous Society of the world. We have always been without frontiers and are by far the most international of the weed science societies in terms of number of subsidies allocated to non-European fellows. However, let me express a little concern in seeing that we received very few applications from Europe. How can we interpret this? Is this possibly due to the present delicate economic situation in many European countries which may prevent scientists to travel long distances? Or is it due to the declining number of weed scientists in our continent, a phenomenon which seems difficult to arrest and whose reasons unfortunately go very much beyond our possibility of taking action? Or, rather, is it possibly due to lack of effective communication on this funding opportunity? I would be happy if you could express your view on this. If you feel that we have lacked in communicating this, then knowing it would be for us of utmost importance for taking remedies in the next possible occasion.

Still on conferences and the like, please remember that next year we will have our major Symposium in Samsun, Turkey, from 23 to 27 June. You can find preliminary information on this important event at: <http://www.ewrs2013.org>. I invite you to contact the local organisers to plan your journey to the Black Sea coastline well ahead of time. As soon as you will have returned from your summer break do not forget to log in to the Symposium website and submit your contribution. The EWRS Scientific Committee will have a dedicated meeting in Pisa next autumn to finalise the Symposium programme. We look forward to another scientifically and socially vibrant event!

I wish you all a fruitful spring full of inspiring weedy issues!

*Ad majora!*

Paolo Barberi

[Back to Content](#)

## REPORT TO THE EDITORIAL BOARD OF WEED RESEARCH FOR 2011

EJP Marshall, Editor-in-Chief; [jon.marshall@agroecol.co.uk](mailto:jon.marshall@agroecol.co.uk)

### Summary

In 2011, *Weed Research* had a year of consolidation, with similar numbers of papers submitted (247) and published (68) as in 2010. There were no changes in the Editorial Board, or in the Production staff. There was a drop in the 2010 ISI Impact Factor, which was disappointing, but there was a similar trend in related journals and we maintained a slightly higher impact compared with *Weed Science*. The Board also handled similar numbers of papers, though there was an increase in initial rejections. The speed with which papers were handled showed a slight reduction in the mean time between submission and publication. Looking forward, we anticipate a similar year in 2012, though we will be expanding the Editorial Board to strengthen some topic areas.

### Management and Production

The ScholarOne system of online submission and review continues to work well and facilitates submission from anywhere with an internet connection. Papers, once accepted and finalised by the EiC, go electronically from the Manuscript Central site to our Production Editor, Ika Lestari, at Wiley Services Singapore, who prepares manuscripts for the typesetters in India. It is always helpful to put a face to a name, so it was pleasing to be able to visit Ika in November and I am grateful for her hospitality and her continuing efficient service. Papers are set to a high standard by SPS Ltd in Chennai, India; they send proofs regularly to authors and editors. The journal is printed in Singapore by C.O.S. Printers Pte Ltd. The page extent for the journal in 2011 was 672 pages and remains at this level. Once papers are set, they appear as pre-publication articles on the *Weed Research* online Early View service on the Wiley Online Library platform: (<http://onlinelibrary.wiley.com/journal/10.1111/%28ISSN%291365-3180>). Journal support and marketing continues to be provided by our publishers, Wiley-Blackwell, Oxford.

### Editorial Board

During 2011, there were no changes to the Editorial Board. I am very grateful for the hard work that each of the Subject Editors has done in handling manuscripts, editing and maintaining the high standards of the journal, as well as helping authors to develop their writing skills. We need to keep the Board numbers at around 30, so we will be recruiting some new editors in 2012.

### Impact factor

The citation indices for *Weed Research* in 2010 dropped back from the highest level ever achieved by the journal in 2009 (Fig. 1) to 1.622, but we remained ahead of *Weed Science*. In terms of immediacy, the journal does not score highly, but the citation half-life of our papers is more than 10 years. This means our papers continue to be cited for many years. The journal lies 20<sup>th</sup> out of all 74 agronomy journals and 72<sup>nd</sup> out of 187 plant science journals.

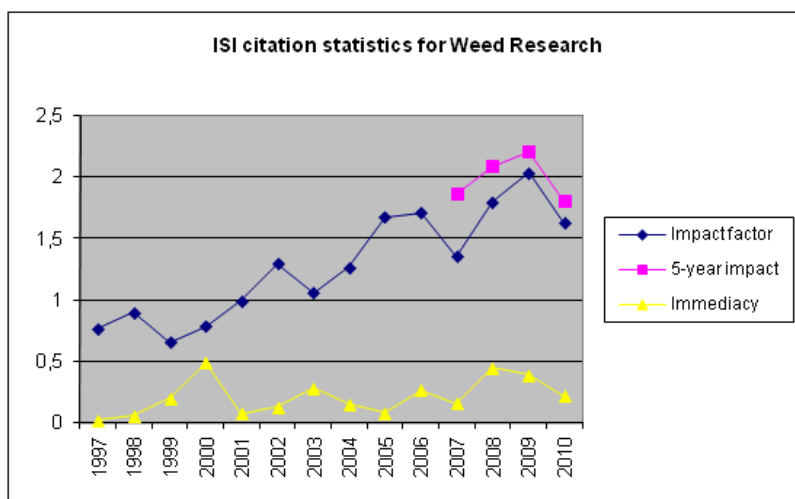


Fig. 1 The ISI impact factors and immediacy score for *Weed Research* between 1997 and 2010.

The initiatives to improve the impact and immediacy of the journals, including soliciting reviews, shorter Insights papers and encouraging authors to cite relevant recent articles in the journal, continue to help the journal impact factor.

### Published papers in 2011

A total of 68 papers were published in Volume 51 in six issues, slightly more than 2010. There were five reviews published (López-Granados *et al.*: Issue 1; Andreasen & Streibig, Clements & DiTommaso: Issue 3; Belz: Issue 4 and Gerber *et al.*: Issue 6) and six Insights (Müller *et al.*: Issue 3; Délye *et al.*, Rodenburg & Bastiaans: Issue 5; Andújar *et al.*, Pikart *et al.* and Shaw *et al.*: Issue 6). There has been a general trend of increasing journal issue size (Fig. 2), but this has stabilised over the past three years. Mean paper length was 10 pages. The origins of published papers over the past three years is summarised below in Table 1. Published papers in 2011 were mostly from Europe (66%), with 12% for North America. Asia provided 9%, while 7% came from Australia and New Zealand. Two papers came from Africa, two from South America, but none from the Near East this year. There is a good diversity in the origins of published papers, with a bias to Europe, the home of the Society.

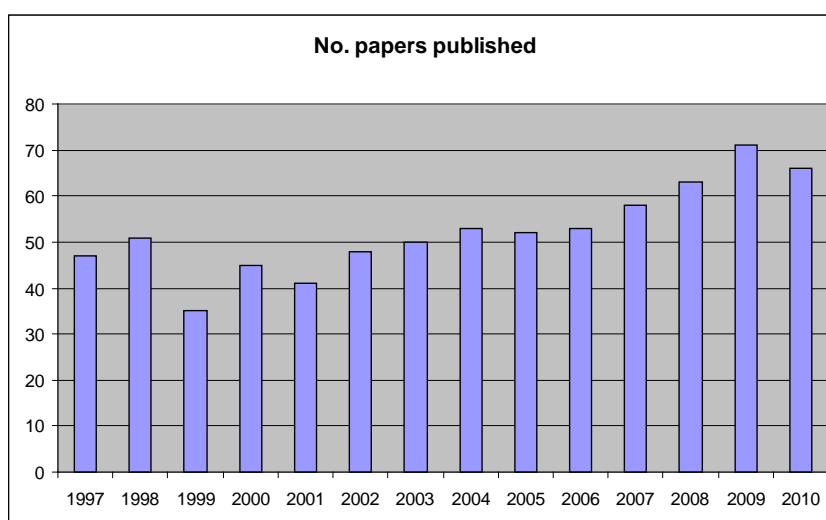


Fig. 2 Numbers of papers published each year in Weed Research, 1997-2010.

Table 1 Geographic origins of papers published in Weed Research 2009-2011

	2009 (total 71 papers)	2010 (total 66 papers)	2011 (total 68 papers)
<i>Europe</i>	28	35	45
Austria		1	
Belgium		2	2
Czech Republic			3
Denmark	3	1	6
Finland			2
France	3	7	2
Germany	5	1	5
Hungary	1		1
Italy	1	6	1
Netherlands	3		4
Norway		2	
Slovenia	1		
Spain	2	9	8
Sweden	4	2	2
Switzerland			3
UK	5	4	6

	2009 (total 71 papers)	2010 (total 66 papers)	2011 (total 68 papers)
<i>Near/Middle East</i>	3	5	0
Israel	2	1	
Lebanon	1	1	
Turkey			
Iran		3	
<i>N America</i>	12	10	8
Canada	4	2	3
USA	8	8	5
<i>S America</i>	5	3	2
Argentina	3	3	1
Brazil	2		1
<i>Australasia</i>	11	7	5
Australia	5	7	5
New Zealand	6		
<i>Africa</i>	1	1	2
Cameroon	1		
Tanzania			1
South Africa		1	1
<i>S &amp; SE Asia</i>	11	5	6
Bhutan	1		
China	8	1	3
Japan	2	2	1
Korea		1	2
Philippines		1	

The time taken for the review and editorial process is one that authors are sensitive to, so data on the published papers are summarised in terms of time in days from submission to acceptance, time to publication and time between acceptance and publication (Table 2). The average time to first decision on all initial 2011 submissions was 77 days.

Table 2 Mean time in days (and range) between submission, acceptance and publication in Weed Research, for papers published between 2005 and 2011.

Year	Time to acceptance (days)	Time to publishing	Time between acceptance and publishing
<b>2005</b>	262.4 (64 – 1130)	423.7 (216 – 1240)	161.3 (110 – 228)
<b>2006</b>	226.9 (29 – 588)	384.9 (122 – 739)	158.0 (80 - 254)
<b>2007</b>	228.0 (54 – 586)	369.7 (163 – 758)	141.7 (66 - 244)
<b>2008</b>	183.9 (26 – 477)	345.3 (152 – 642)	161.4 (82- 253)
<b>2009</b>	165.7 (8 -393)	351.9 (172 – 583)	186.2 (108 – 311)
<b>2010*</b>	197.8 (47 - 468)	349.6 (184 - 637)	158.3 (103 – 213)
<b>2011</b>	168.4 (21 – 420)	347.1 (191 – 602)	178.9 (128 -228)

\*Data excluding two outliers, one taking 1 day and a second taking 656 days to first decision.

Comparisons with monthly data for previous years are given in Table 3. There is room for improvement within the Editorial Board, to keep handling times as short as possible.



Table 3 Time in months between submission and publication for papers published in Weed Research between 2000 and 2009

Year published	Submission to acceptance		Acceptance to publication		Submission to publication Total
	Months Mean	range	Months mean	range	
2000	7.7	1 - 20	6.3	4 - 9	14.0
2001	9.0	2 - 20	7.2	5 - 9	16.2
2002	9.7	3 - 19	6.3	3 - 10	16.0
2003	8.2	2 - 34	4.1	3 - 8	12.3
2004	7.9	1 - 21	3.6	2 - 5	11.5
2005	8.6	2 - 37	5.3	3 - 8	13.9
2006	7.6	1 - 20	5.3	3 - 8	12.8
2007	7.6	2 - 20	4.7	2 - 8	12.6
2008	6.1	1 - 16	5.4	3 - 8	11.5
2009	5.4	1 - 13	6.1	3 - 10	11.5
2010	6.3	1 - 15	5.2	3 - 7	11.5
2011	5.5	1 - 14	5.9	4 - 7	11.4

### Manuscript submissions in 2011

Numbers of manuscripts submitted to the journal in 2011 were similar to 2010, still averaging close to 20 per month. An analysis of where papers are coming from is given in Table 4. Submissions from the Middle East, notably Iran, have shown a welcome increase.

A comparison of submissions in 2010 to publications in 2011 again indicates that a greater proportion of papers from Europe, North America, Australia and New Zealand are ultimately published (40%), compared with submissions from Asia and the Middle East (<10%). The low figures for Asia are a continuing concern. Jens Streibig (Copenhagen) and Jon Marshall have developed a short course on how to write a paper for an international journal like Weed Research, aimed at PhD students. This was given at the 2010 EWRS Symposium in Kaposvár, Hungary. A well-attended seminar on writing for Weed Research was given at the Third Iranian Weed Science Congress in Babolsar in February 2010. The course will be given at the next IWSS Congress in China in June 2012.

Table 4 Numbers of manuscripts submitted (and %) from different parts of the globe from 2007 - 2011

Region	Europe	Middle East	N America	S America	Australasia	Africa	Asia
No. submissions in 2011	82 (33%)	29 (12%)	22 (9%)	17 (7%)	11 (5%)	9 (4%)	77 (31%)
No. submissions in 2010	101 (43%)	18 (8%)	19 (8%)	14 (6%)	14 (6%)	8 (3%)	63 (27%)
No. submissions in 2009	113 (37%)	28 (9%)	37 (12%)	15 (5%)	23 (8%)	17 (6%)	70 (23%)
No. submissions in 2008	111 (42%)	16 (6%)	26 (10%)	20 (8%)	19 (7%)	15 (6%)	54 (21%)
No. submissions in 2007	99 (39%)	22 (9%)	34 (14%)	10 (4%)	16 (6%)	15 (6%)	55 (22%)

An examination of the fate of the 2011 submissions to date indicates that of the 237 submissions, 42 have been accepted, 16 are under revision, 69 were rejected pending resubmission and 108 have been rejected outright, leaving 12 manuscripts in progress, as at 5th March 2011. Of those papers processed, 25% will be accepted and 75% have been rejected. As a means of controlling the load on Subject Editors, initial rejections were made by the EiC for 59 (24%) manuscripts submitted during 2010.

The Subject Editors handled, on average, 6.5 new manuscripts each during the year, with a range of between five and eight (Per Kudsk, Paul Neve and Jonathan Storkey). I am very grateful to each member of the Board for their hard work, intellectual rigour and impartiality. Weed Research is dependent on the skills of the Subject Editors and they are to be congratulated on the standard of the journal. Likewise, they depend to a large degree on the expertise and good sense of our many reviewers and we thank them all. In December 2011, we published the list of all 261 reviewers (305 in 2010) used between 1 October 2010 and 30 September 2011 (See 51, 661-662).

## 2012 in prospect

Current submission rates are similar to 2011, so we anticipate the same level of work in the year ahead. I expect Subject Editors will again be handling around seven manuscripts each. Initial rejection levels are running at around 20%, so this should limit the load of editors. However, we do need to expand the Board. An online Editorial Board meeting is in progress, which will review our coverage, operating methods and also draw together suggestions for new Board members. Our aim for the journal is to maintain and preferably increase the citation metrics for the journal, so we are seeking good review papers and important research papers, in order to publish the best work in weed science from around the globe. If you have suitable research papers or topics for review or Insights papers, feel free to discuss your ideas with anyone on the Editorial Board, or simply submit your manuscript at: <http://mc.manuscriptcentral.com/wre>

E J P Marshall  
Editor-in-Chief  
5 March 2012

[Back to Content](#)

---

## SCIENTIFIC COMMITTEE AND WORKING GROUPS

---

### EWRS WORKING GROUP ON EDUCATION AND TRAINING

Dear Colleague,

The EWRS Education and Training Working Group is offering three workshops in 2012 and 2013. A short description of each workshop is presented below and the full details on the 2013 workshops can be found on the EWRS Symposium website at <http://www.ewrs2013.org/latest-news.aspx?id=15>.

The number of places are limited, therefore register early online for the 2013 workshops at <http://www.ewrs2013.org>.

#### Use of the free Statistical Software R:

- Subject: Use of linear and nonlinear regression in physical, chemical and biological weed control
- Presented in conjunction with the VI<sup>th</sup> International Weed Science Congress
- Time: 17<sup>th</sup> of June 2012 at 8:00-17:00
- Venue: New Century Grand Hotel, Hangzhou, China
- Instructors: Jens Carl Streibig, Christian Ritz, Faculty of Science, University of Copenhagen
- For further information and registration, please contact Jens C. Streibig ([jcs@life.ku.dk](mailto:jcs@life.ku.dk))



### **Scientific and documentary photography for professionals in agriculture**

- Presented in conjunction with the 16th EWRS Symposium (European Weed Research Society)
- Time: 23<sup>rd</sup> of June 2013 at 9:00 to 17:00
- Venue: Samsun, Turkey
- Ondokuz Mayıs University Congress Centre (Pembe Hall)
- Instructors: Daniel Cloutier & Jens C. Streibig

### **How to write a paper for a scientific journal**

- Presented in conjunction with the 16<sup>th</sup> EWRS Symposium (European Weed Research Society)
- Time: 23<sup>rd</sup> of June 2013 at 9:00 to 17:00
- Venue: Samsun, Turkey
- Ondokuz Mayıs University Congress Centre (Pembe Hall)
- Instructors: Jon Marshall & Jens C. Streibig

[Back to Content](#)

---

## **MEMBER CONTRIBUTIONS**

---

### **WEED SCIENCE SOCIETY OF GREECE - WEED SCIENCE IN GREECE**

By Prof. Petros Lolos, University of Tessaly, Greece; [lolaspet@uth.gr](mailto:lolaspet@uth.gr)

#### **Part I- Weed Science Society of Greece**

Weed Science Society of Greece (WSSG) was formed in 1982 as a national non-profit professional society by 21 founding members. Today the Society has 137 members with more than 60 being active. It has been proposed and decided the name to be changed to Hellenic Weed Science Society (HWSS). The WSSG is run by a Council of 7 members elected every two years.

WSSG is open to everyone who has an interest and experience in weed science and related topics. The Society members come from different sectors such as Government organizations, Agrochemical companies, Universities, Technological Institutes, and independent research organizations and the private sector. The objectives of the Society are "To promote and encourage research and technology in the area of weeds of crops in Greece, of herbicides and growth regulators to the benefit of greek Agriculture". These objectives are fulfilled through Newsletter, Society's Scientific journal "Zizaniology", Books, Conferences, Seminars, Training courses for growers and/or agronomists, participation of Society members as invited speakers on national or international weed science topics in Conferences, Symposiums, Forums, etc.

In 1982 the WSSG started to publish the first issue of its scientific journal Zizaniology until 1996 when the 10<sup>th</sup> and last issue was published. In the years 1982 to 1986 the society sponsored an annual Conference and since 1988 to today a biennial Conference during which members and other weed scientists can present their research and scientific work, information is exchanged and technology is transferred. The 17<sup>th</sup> Conference is held in November 22 to 24, 2012 in Athens. Main theme is "Weed Science-Agriculture-Urban Environment".

The website of the WSSG ([www.eze.org.gr](http://www.eze.org.gr)) is designed to inform WSSG members and interested parties of the activities of the Society, and to disseminate weed science knowledge across Greece and beyond.

#### **Part II- Weed Science in Greece**

Records show that interest in weed science in Greece started in the decade of 1930 as it can be implied by the articles in 1936 and 1939 concerning weeds in the fields of cereal and *Vicia* crops (Papadopoulos). The first comprehensive book entitled 'The more important weeds of Greece' describing

the origin, biology and morphology of 170 weeds in Greece was by Malakate in 1939. In this book suggestions were also given for the use of sulfuric iron, sulfuric ammonium or sulfuric acid as herbicides.

In 1939 Zaganaris of the University of Thessaloniki published a booklet on ecobiology and systematics of weeds of Thessaloniki region. Later, scattered information- reports on weeds in Greece are found in botanical treaties (Diapoulis, 1948; Ganatsias 1957; Gennadios, 1959.) and encyclopedias (Kavvadas, 1956-1964). Description and control of some weeds is also presented by Christidis in the textbooks "Winter cereals" (1963) and "Cotton" (1965). The common weeds in irrigation and drainage channels and their control with chemicals were described in 1971 (Salapatas). Lists of weeds present in Greece were given in 1979 (Damanakis) and 1980 (Lolas). The list with the accepted common names of weeds in Greece was published in 1983 in Zizaniology (Damanakis et al.).



Descriptions and list of weeds are given in books in 1980 (Sotiropoulos), in 1981 (Pesexidis), in 1996 (Eleftherohorinos), in 2003 (Lolas), in 2004 (Vasilakoglou), and in 2009 (Eleftherohorinos and Giannopolitis). A CD-ROM in 1996 (Lolas) presents weed biology, morphology and control for 111 weeds in Greece with 475 colored pictures (example: picture of *Silene vulgaris* seeds and picture on this EWRS Newsletter cover). Weed descriptions with colored pictures were published in agricultural magazines in 1997 (Lolas) and for about 300 weeds in 1989, 2003 and 2004 (Giannopolitis). Articles concerning occurrence, biology and/or control of different weeds, or first

report, appear in the Greek literature (Zizaniology, Conference Abstracts, Growers Magazines), or international literature from 1961 to 2011.

Weed research in Greece concerns all aspects of weeds, such as new weeds first occurrence, biology, competition, allelopathy, weed control in various crops, resistance to herbicides. Weed resistance to herbicides was first reported in 1989 (Giannopolitis and Vassiliou) for *Echinochloa crus-galli*. Since then 6 weeds were reported to have developed resistance, *Lolium rigidum* (Kotoula et al. 2000), *Amaranthus retroflexus* and *Chenopodium album* (Eleftherohorinos et al, 2000), *Papaver rhoeas* (Kotoula, 1996), *E. crus-galli* two biotypes (Vasilakoglou et al, 2000). Two other weeds, *Avena* spp. *Solanum nigrum* have been reported to have shown resistant biotypes to ACCase herbicides and prometryn respectively.

Research on weeds in the period 1930 to 1990 was conducted mainly by the Ministry of Agriculture through the different Institutes (Cereal Institute, Viticulture Institute, Cotton Institute, Horticulture Institute, Deciduous Trees Institute) and over 20 Experimental Research Stations located all over Greece, by Sugar Beet Industry (Research Service), Benaki Phytopathology Institute, by National Tobacco Board of Greece through the Tobacco Institute of Greece, by Agrochemical Companies and by Universities and Technological Institutes. After 1990 research on weeds is mainly carried out by Universities, Technological Institutes, National Agricultural Research Foundation (NAGREF) which belongs to Ministry of Agriculture and by Agrochemical Companies.

Weed courses at undergraduate and graduate level are taught at the Agricultural University of Athens Dept. of Crop Production, Aristoteles University of Thessaloniki Dept. of Agronomy, University of Thessaly Dept. of Agricultural Crop Production and Rural Environment, and Democritus University Dept. of Agricultural Development. Laboratory responsible for the courses are Weed Science Lab at the University of Thessaly and Agronomy Lab in all other three Universities. Technological Institutes at Thessaloniki, Larisa, Arta, Florina, Kalamata and Crete have only an undergraduate weed science course.

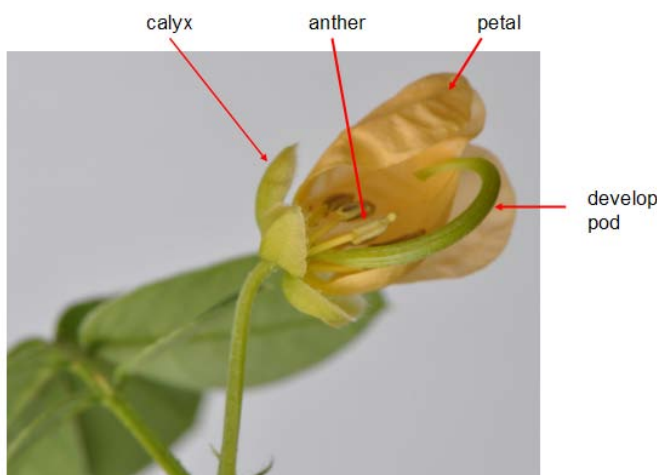
## HISTOLOGY OF *CASSIA OBTUSIFOLIA*

Dear Colleagues,

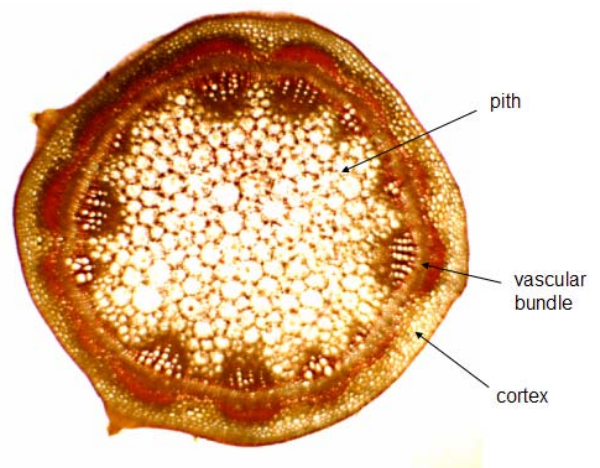


This time, I am struggling with the alphabetical order of my objects. I wanted to start the letter C with *Cassia obtusifolia* as it was known to me for a long time. At least six synonyms are, however, published for this species. I am listing here three. *Senna obtusifolia* (L.) H.S.Irwin & Barneby syn *Cassia tora* L. syn *Cassia obtusifolia* L. (Bayer code: CASOB). Sicklepod is an annual, leguminous weed of crops in North, Central, and South America, Asia, Africa, and Oceania. To my knowledge, it is not a European. It prefers warm climates and is a problem weed of soybean in Southern United States and in Brazil. There are around 600 members within the genus *Cassia*. Surprisingly, we don't find many leguminous weeds in Northern Europe, other than in tropical crops.

*S. obtusifolia* in front of a corn field in Mississippi



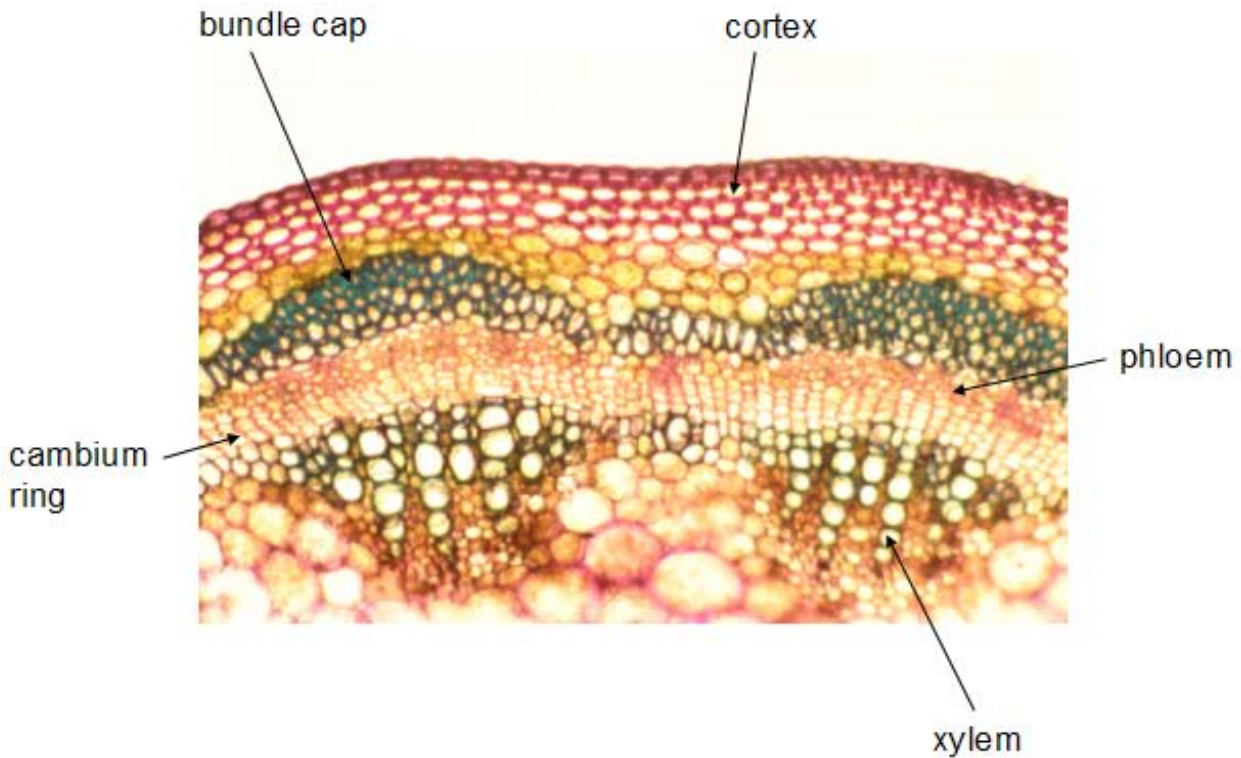
Flower of *S. obtusifolia*



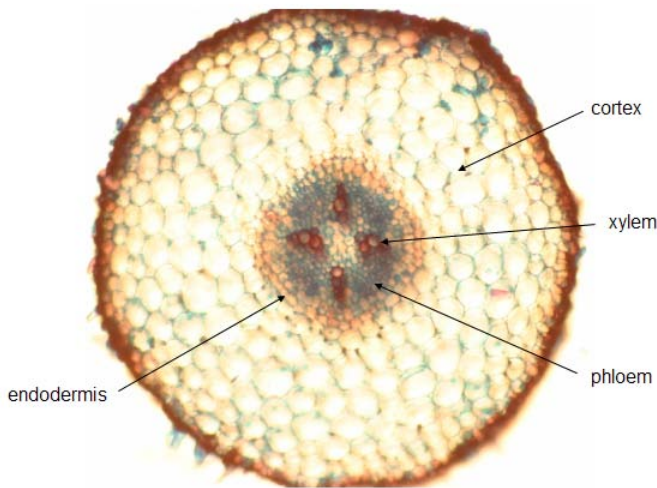
Transverse section through stem of *S. obtusifolia* ; Etzold blue, 40x

The vascular bundles are arranged in a ring. They are protected by lignified bundle caps. A closed cambium ring leads to secondary growth which makes the stem thick and strong.





Transverse section through stem of *S. obtusifolia* with two vascular bundles and with closed cambium ring forming new, interfascicular tissue; toluidine blue, 100x



Most *S. obtusifolia* roots seem to be tetrarch. The picture shows a transverse section through tetrarch root of *S. obtusifolia* Etzold blue, 100x

Hansjörg Krähmer

[Back to Content](#)

### PRIZE WINNING POSTER

By Thomas Eggers, [uth.eggert@googlemail.com](mailto:uth.eggert@googlemail.com)

During the 25<sup>th</sup> German Conference on Weed Biology and Weed Control which took place from 13 to 15 March 2012 in Braunschweig, Germany, Dr. Thomas Eggers – one of the honorary members of the EWRS - presented a poster showing the symbolical meaning of blue, red and white flowering weeds in daily objects and art. He obtained the third prize for his work. Paolo Bàrberi, EWRS President, sends his own and the Board's congratulations to Thomas, thanking him for enlightening us with an unusual view on weeds. "Excellent weed scientists will always have something interesting to share!"

## Blau & rot & weiß blühende Unkrautarten: Symbolik für Natürlichkeit und Kraft der Natur in Kunst und Kultur, Alltag und Werbung

Thomas Eggers

In Blau, der Farbe der **Ruhe** und **Zufriedenheit**, zusammen mit dem kraftvollen Rot der **Lebensfreude** und Weiß als Farbe der **Unschuld** und **Sauberkeit** muss eine hohe Attraktivität liegen, so dass diese Farbenkombination in vielen Lebensbereichen gewählt wird, Harmonie und Verlässlichkeit ausstrahlend.



Gedenkgebilde am Grabmal des Unbekannten Soldaten, Arc de Triomphe, Paris



Kinderbücher von KOCH-GOTHA & SKTUS [1924] und ZINK-PINGEL 1987

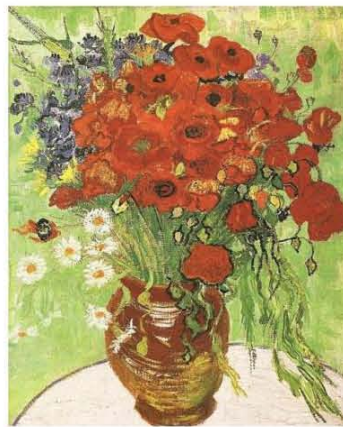


Vasen:  
Topkapı-Palast, Istanbul; Art nouveau GALLÉ



Mokka-Tassen aus Schweden und aus Meißen

Mit der Farbenkombination der **blauen** Blüten der Kornblume *Centaurea cyanus*, der **roten** Blüten von Klatsch- oder Saat-Mohn *Papaver rhoeas* bzw. *P. dubium* und der **weißen** Blüten der Kamillen *Matricaria recutita* oder *Tripleurospermum inodorum* wird dieses Farbenspiel vielfältig aufgegriffen: in Büchern, auf Gemälden, in Kultur und Kunstgewerbe, auf Gebrauchsgegenständen, auf Lebensmittel-Packungen oder in der Werbung.



VAN-GOGH-Gemälde:  
Stilleben 1890; Postbote Roulin 1889



*Centaurea cyanus*,  
Bombyx



*Papaver dubium*,  
Syrphide



*Tripleurospermum inodorum*,  
Apis



Knäckebrot-Dose (um 1990 auf einem Flohmarkt)



Sammlung von Objekten aller Art [1975... 2011]



---

## CALL FOR CONFERENCES

---

### THE VI<sup>TH</sup> INTERNATIONAL WEED SCIENCE CONGRESS

17-22 June 2012,  
Hangzhou, China

During the 6<sup>th</sup> International Weed Science Congress in Hangzhou, China, a lecture course will be organized on 'Writing and publishing a paper in Weed Research'. The course will take place on Friday 22 June 2012 from 09:30 to 13:00.

#### **Lecture course: Writing and publishing a paper in *Weed Research***

Instructors: Dr Jon Marshall (Marshall Agroecology Ltd, UK) Editor-in-Chief: Weed Research  
Prof Jens C. Streibig (Weed Science, University of Copenhagen) Editor-in-Chief (Weeds)  
Crop Protection

A short lecture course, suitable for postgraduates, on writing a paper for an international journal, to be presented in English.

Science can be hard to read and understand, born out of the complexity of scientific concepts, data and analysis. Writing in a second language is even harder. However, complexity of thought need not lead to impenetrability of expression. Improving the quality of writing may improve the quality of thought and the quality of the science. Proper preparation and construction also aid the submission and review process.

#### **Course plan:**

09:30 – 10:30

- Welcome
- Why publish? When to publish? Where to publish?
- The peer review process – what is it and how does it work?
- Scope and content for Weed Research: what and how much to publish?

11:00 – 12:00

- Journal style
- The structure of a paper (Title page, Summary, Keywords, Introduction, Materials & Methods, Results, Discussion, Acknowledgements, References, Tables, Figures, Appendices, Supplementary information)
- Writing English – good and bad practice
- The science of statistics and data presentation

12:15 – 13:00

- After submission: decisions, responding to reviewers
- The final publication stages – copy-editing, proofs and reprints
- Questions

Registration is required, as number may be limited. We hope to provide the course free, but there may be a small charge to cover room hire. If you would like to attend, please send your name, email address and the name of your institution to: [jon.marshall@agroecol.co.uk](mailto:jon.marshall@agroecol.co.uk) by 1 June 2012.



## **1<sup>ST</sup> INTERNATIONAL RHEA CONFERENCE: "APPLICATIONS OF AUTOMATED SYSTEMS AND ROBOTICS FOR CROP PROTECTION IN SUSTAINABLE PRECISION AGRICULTURE"**

Pisa, Italy  
19 – 21 September 2012

### **Context**

RHEA-2012 is being fostered by the project RHEA (Robot fleets for highly effective agriculture and forestry management, FP7-NMP 245986). The RHEA consortium comprises a number of research centres, universities, and companies funded by the European Commission through the Seventh Framework Programme to develop robotic fleets for sustainable weed control and pesticide management in agriculture and forestry.

### **Aim**

The conference is aimed at spreading and sharing knowledge and information among researches related to the applications of automated systems and robotics for crop protection in sustainable precision agriculture.

### **Themes**

The RHEA-2012 is divided into two main themes containing plenary and parallel sessions devoted to:

#### ***Theme 1: Strategies and tools for precision agriculture***

- Topic 1.1: Automated machines for chemical weed control.
- Topic 1.2: Automated machines for physical weed control.
- Topic 1.3: Automated machines for tree crop protection.
- Topic 1.4: Agronomical, economical and safety impacts of automated machines use.

#### ***Theme 2: Automation and robotics for precision agriculture***

- Topic 2.1: Design and control of autonomous agricultural vehicles and systems
- Topic 2.2: Sensing, computer vision and image analysis in agricultural processes
- Topic 2.3: ICT technologies in precision agriculture

### **Venue**

The First International Conference on **Robotics and associated High-technologies and Equipment for Agriculture (RHEA-2012)** will be held in Pisa, Italy, from 19 to 21 September 2012. It is organized by the *Centro Interdipartimentale di ricerche agro-ambientali Enrico Avanzi (CIRAA), Facoltà di Agraria, Università di Pisa*.

### **Registration**

The registration form can be downloaded from the RHEA conference website ([www.rhea-conference.eu/2012](http://www.rhea-conference.eu/2012)) and once completed it should be send to the Conference Secretariat ([Imartelloni@agr.unipi.it](mailto:Imartelloni@agr.unipi.it)).

### **Important Dates**

- Full paper electronic submission: April 30, 2012
- Notification of final acceptance : May 31, 2012

## **4<sup>TH</sup> ENDURE SUMMER SCHOOL 'AGROECOLOGICAL ENGINEERING FOR CROP PROTECTION'**

7 - 12 October 2012

SIAF, Volterra, Italy

### **Presentation**

This summer school for PhD students is part of the Education activities envisaged in the European Research Group ENDURE (European Network for the Durable Exploitation of Crop Protection Strategies). ENDURE is a consortium of 14 research institutes, universities and extension organisations providing information and a platform for knowledge exchange regarding all aspects of Integrated Pest Management (IPM). The group builds on the experience and knowledge amassed within the European Commission-funded ENDURE Network of Excellence (2007-2010).

ENDURE supports scientists, policy and farm advisers, and trainers by providing research tools, a freely available online information centre and a Network of Experts. ENDURE is driven by scientists and farm advisers from institutions across a wide range of European countries. It offers support and validated information to farm advisers via the Network of Advisers and the ENDURE Information Centre, to scientists via the ENDURE Resource Centre, and to policy advisers via the ENDURE Network of Experts, all of which can be accessed on the ENDURE website at [www.endure-network.eu](http://www.endure-network.eu).

The Summer School will take place at [SIAF](http://www.sssup.it), an International School of Advanced Education located at Volterra (60 km SE of Pisa), in the heart of Tuscany countryside. The Scuola Superiore Sant'Anna of Pisa (SSSA; [www.sssup.it](http://www.sssup.it)) is the local organiser.

### **Aims and rationale**

The objective of the Summer School is to make PhD students meet scientists who are actively implementing agro-ecological approaches to develop cropping systems which make inherent use of IPM strategies. The crop protection focus is on the application of agroecological principles to cropping systems and how the management of weeds, pests and diseases can be jointly addressed to exploit synergies and avoid negative interactions among management practices. The underlying idea here is that successful IPM should not merely be based on "substitution", i.e., the tactical replacement of chemical pest control by mechanical or biological interventions. Historically, there has been a wealth of work at the level of agro-ecological principles and the observation of agroecosystemic processes at work in family farms in the developing world. In contrast, the applicability of agroecology in average European-style farms is still in its infancy. The extent to which agroecology can be exploited in this context is a current question and will be actively addressed during the summer school.

### **Programme**

The summer school programme will include (1) lectures given by internationally-renowned experts, (2) team work to facilitate active participation of the selected PhD students and their interaction with the lecturers and (3) opportunities during the whole week for students to discuss individually with the lecturers about their PhD project or related questions.

The programme will include:

- 1) Overview of agroecology and of IPM
- 2) Agroecology for IPM in relation to weeds, pests and diseases
- 3) Multipest modelling to support integration between pest, weed and disease management
- 4) Agroecological engineering in cropping systems design in the tropics and in temperate zones.

The programme is being developed by the team of Summer School lecturers and details will be decided based on the CVs of selected students.

### **Application and deadlines**

### **Who can apply**

The summer school is directed to a minimum of 15 and a maximum of 20 PhD students; 12 places are reserved for students from [ENDURE partners](#). The PhD students applying for this course are expected to be enrolled in a PhD programme whose topic is connected to IPM for sustainable crop protection. Upon request, the selection committee may decide to accept participation of researchers with a special interest in this topic who are not performing a PhD.

### Study grants

Students that do not discuss their PhD before January 2013 and that are NOT enrolled by [ENDURE partners](#), can compete for 1 of the 3 study grants ENDURE made available for stay at SIAF (worth €600,00, travel not included). The grants will be awarded to the PhD students with the strongest CV and supporting documentation (see below). In case several students have similar results, secondary selection criteria will be to provide grants to students from different continents and to have an equal gender distribution among participants to the summer school. The selection will be performed by a committee of 3 Professors and/or Researchers appointed by the Director of the Institute of Life Sciences of the Scuola Superiore Sant'Anna.

### Selection criteria

Interested students are requested to register to this website and complete the online application procedure. Applications must include:

- Filled application form (<http://www.land-lab.org/aesito/endure2012>).
- Short CV (max two A4 pages, Times New Roman 12 pt)
- Summary of PhD Project (max one A4 page, Times New Roman 12 pt)
- A motivation letter (max one A4 page, Times New Roman 12 pt)
- A support letter from their supervisor(s)

### Costs

- Participation cost to the summer school is €600,00, and includes housing, meals, access to lecture room, daily coffee breaks, and a guided tour to visit Volterra on Wednesday afternoon. The cost is reduced with respect to the actual cost of participation thanks to co-financing by ENDURE partners which covers participation of lecturers, renting of lecture rooms, coffee breaks and a guided tour to Volterra.
- Travel is not included, except for the bus from Pisa airport to SIAF-Volterra on Sunday evening and back again on Saturday morning.

### Deadlines

- 16 April 2012: Call release.
- 30 May 2012: Closing date for receipt of online applications.
- 15 June 2012: Notification of acceptance to applicants (via e-mail and this website)
- 20 June 2012: Selected students have to communicate formally their acceptance to participate (at [endure.summerschool@sssup.it](mailto:endure.summerschool@sssup.it)).
- 7 October 2012 at 18.00: meeting at Pisa Airport and departure by buss to SIAF, Volterra.
- 8 - 12 October 2012: Summer school

### Information

Requests of information can be sent to [endure.summerschool@sssup.it](mailto:endure.summerschool@sssup.it)

## INTERNATIONAL CONFERENCE GLOBAL HERBICIDE RESISTANCE CHALLENGE 2013

18-22 February 2013  
Perth, Australia

Global food production is one of the greatest challenges of the 21<sup>st</sup> Century. Sustaining world food production requires reliable control of yield reducing crop weeds. Herbicides are the principal tool for

crop weed control yet their sustainability is threatened by the evolution of herbicide resistant weed populations in many parts of the world. The latest chapter in resistance evolution is the widespread appearance of glyphosate resistant weeds threatening the success of glyphosate resistant crops. Crops with new herbicide resistance gene traits, new herbicides and non-chemical methods to manage weeds are being introduced to counter the weed/resistance threats.

The Global Resistance Challenge 2013 conference offers a multidisciplinary forum focused on all aspects of herbicide resistance in crops and weeds and their impact on global food production. Scientific sessions will range from the molecular basis of herbicide resistance evolution through agro-ecology and agronomy to on-farm resistance management.

The Global Resistance Challenge 2013 conference will provide a stage for young and established private and public sector researchers, crop consultants and others to present their work in front of a welcoming international audience in the beautiful portside city of Fremantle, Perth, Western Australia. We welcome everyone who wishes to discover the latest advances in herbicide resistance to Perth in February 2013, to experience a magnificent Western Australian late summer. For more information: <http://www.herbicideresistanceconference.com.au/>

[Back to Content](#)

---

---

### UPCOMING CONFERENCES AND WORKSHOPS

---

---

#### 64<sup>TH</sup> INTERNATIONAL SYMPOSIUM ON CROP PROTECTION

Ghent, Belgium

22 May 2012

<http://www.iscp.ugent.be>

---

---

#### INTERDISCIPLINARY WORKSHOP OF THE EWRS WORKING GROUP SITE SPECIFIC WEED MANAGEMENT (SSWM)

University of Copenhagen, Denmark

28-31 May 2012

[svc@life.ku.dk](mailto:svc@life.ku.dk) (Prof. Svend Christensen)

---

---

#### VI<sup>TH</sup> INTERNATIONAL WEED SCIENCE CONGRESS (IWSC): DYNAMIC WEEDS, DIVERSE SOLUTIONS

17– 22 June 2012

New Century Grand Hotel, Hangzhou, China

<http://www.iwss.info>

---

---

#### RAISING THE BAR: IMPROVING THE STANDARD AND UTILITY OF WEED/INVASIVE PLANT RESEARCH

25-29 June 2012

B Bar Ranch, Emigrant, Montana, USA

[http://app.lms.unimelb.edu.au/bbcswebdav/courses/NRMT90002\\_2011\\_SM2/Andina/index.htm](http://app.lms.unimelb.edu.au/bbcswebdav/courses/NRMT90002_2011_SM2/Andina/index.htm)

---

---

#### 1<sup>ST</sup> INTERNATIONAL CONFERENCE ON ROBOTICS AND ASSOCIATED HIGH-TECHNOLOGIES AND EQUIPMENT FOR AGRICULTURE (RHEA): "APPLICATIONS OF AUTOMATED SYSTEMS AND ROBOTICS FOR CROP PROTECTION IN SUSTAINABLE PRECISION AGRICULTURE"

19-21 September 2012

Pisa, Italy

<http://www.rhea-conference.eu/2012>

---

---

#### 4<sup>TH</sup> ENDURE SUMMER SCHOOL 'AGROECOLOGICAL ENGINEERING FOR CROP PROTECTION

7– 12 October 2012

SIAF, Volterra, Italy

<http://www.land-lab.org/aesito/endure2012>

---

---

#### 18<sup>TH</sup> AUSTRALASIAN WEEDS CONFERENCE

8– 11 October 2012

Sebel and Citigate Albert Park, Melbourne, Australia  
<http://www.18awc.com>

---

---

**2012 CANADIAN WEED SCIENCE SOCIETY ANNUAL MEETING**

12-15 November 2012  
The Fairmont, Winnipeg, Manitoba  
<http://www.weedscience.ca/home>

---

---

**17<sup>TH</sup> GREEK WEED SCIENCE SOCIETY CONFERENCE**

22– 24 November 2012  
Athens, Greece  
[www.eze.org.gr](http://www.eze.org.gr)

---

---

**CROP PROTECTION IN SOUTHERN BRITAIN (AAB/BCPC/AICC CONFERENCE)**

27-28 November 2012  
East of England Showground, Peterborough, UK  
<http://www.aab.org.uk/contentok.php?id=136&basket=wwwshowconfdets>

---

---

**WEED SCIENCE SOCIETY OF AMERICA ANNUAL MEETING**

4-7 February 2013  
Baltimore, Maryland, USA  
<http://www.wssa.net/>

---

---

**INTERNATIONAL CONFERENCE GLOBAL HERBICIDE RESISTANCE CHALLENGE 2013**

18-22 February 2013  
Perth, Australia  
<http://www.herbicideresistanceconference.com.au/>

---

---

**1<sup>ST</sup> PURE CONGRESS**

19-21 March 2013  
Riva del Garda, Italy  
<http://www.pure-ipm.eu/>

---

---

[Back to Content](#)

---

## EDITORIAL

---

### EWRS BOARD 2012–2013

President 2012-2013	Prof. Dr. Paolo <b>BÀRBERI</b> Land Lab/Agroecology; Institute of Life Sciences Scuola Superiore Sant' Anna Piazza Martiri della Libertà 33 I-56127 PISA	T + 39 050 883 525 F + 39 050 883 526 <a href="mailto:barberi@sssup.it">barberi@sssup.it</a>
Vice President 2012-2013	Prof. Dr. László <b>RADICS</b> Corvinus University of Budapest Dept. Ecological and Sustainable Production Systems Villányi út 29-43. Building "C" H-1118 BUDAPEST	<a href="mailto:laszlo.radics@uni-corvinus.hu">laszlo.radics@uni-corvinus.hu</a>
Past President 2012-2013	Dr. Hansjörg <b>KRÄHMER</b> Kantstrasse 20 D-65719 HOFHEIM	<a href="mailto:Kraehmer-Hofheim@t-online.de">Kraehmer-Hofheim@t-online.de</a>
Secretary 2012-2015	Dr. Andrej <b>SIMONČIČ</b> Agricultural Institute of Slovenia Hacquetova 17 SI-1000 LJUBLJANA	T +386 1 280 52 20 F +386 1 280 52 22 <a href="mailto:andrej.simoncic@kis.si">andrej.simoncic@kis.si</a> <a href="http://www.kis.si">www.kis.si</a>
Treasurer 2012-2015	Drs. Ben <b>POST</b> EWRS Membership Office Postbus 28 NL-6865 ZG DOORWERTH	F + 31 26 3706896 <a href="mailto:ewrs@bureaupost.nl">ewrs@bureaupost.nl</a>
Scientific Secretary 2010-2013	Prof. Josef <b>SOUKUP</b> Faculty of Agrobiolology, Food and Natural Resources Czech University of Life Sciences Prague Kamycka 129 CZ-165 21 PRAGUE 6 - SUCHDOL	T + 420 224 382780 F + 420 224 382780 M + 420 777 206 072 <a href="mailto:soukup@af.czu.cz">soukup@af.czu.cz</a>
Membership Officer	Drs. Ben <b>POST</b> EWRS Membership Office Postbus 28 NL-6865 ZG DOORWERTH	F + 31 26 3706896 <a href="mailto:ewrs@bureaupost.nl">ewrs@bureaupost.nl</a>
Additional Members 2008-2011	Prof. Dr. Bärbel <b>GEROWITT</b> Institute for Land Use University of Rostock Satower Str. 48 D-18051 ROSTOCK	T + 49 381 498 3160 F + 49 381 498 3162 <a href="mailto:baerbel.gerowitt@uni-rostock.de">baerbel.gerowitt@uni-rostock.de</a>
2010-2013	Dr. Jan <b>NETLAND</b> Plant Health and Plant Protection Bioforsk Hoegskoleveien 7 N-1432 AAS	T + 47 97178710 <a href="mailto:jan.netland@bioforsk.no">jan.netland@bioforsk.no</a>
WEED RESEARCH Chairman Editorial Board	Dr. Paul <b>HATCHER</b> School of Biological Sciences, Plant Science Laboratories University of Reading GB -READING RG6 6AS	T + 44 118 378 8091 F + 44 118 378 7464 <a href="mailto:p.e.hatcher@rdg.ac.uk">p.e.hatcher@rdg.ac.uk</a>

[Back to Content](#)



## EWRS SCIENTIFIC COMMITTEE 2012-2013

Chairman / EWRS Vice-President  
2012-2013

Prof. Dr. László **RADICS**  
Corvinus University of Budapest  
Dept. Ecological and Sustainable Production Systems  
Villányi út 29-43. Building "C"  
H-1118 BUDAPEST

[laszlo.radics@uni-corvinus.hu](mailto:laszlo.radics@uni-corvinus.hu)

Scientific Secretary  
2010-2013

Prof. Josef **SOUKUP**  
Faculty of Agrobiology, Food and Natural Resources  
Czech University of Life Sciences Prague  
Kamycka 129  
CZ-165 21 PRAGUE 6 – SUCHDOL

T + 420 224 382780  
F + 420 224 382780  
M + 420 777 206 072  
[soukup@af.czu.cz](mailto:soukup@af.czu.cz)

EWRS President  
2012-2013

Prof. Dr. Paolo **BÀRBERI**  
Land Lab/Agroecology; Institute of Life Sciences  
Scuola Superiore Sant' Anna  
Piazza Martiri della Libertà 33  
IT-56127 PISA

T + 39 050 883 525  
F + 39 050 883 526  
[barberi@sssup.it](mailto:barberi@sssup.it)

## EWRS Working Groups

Biological Control of Weeds

Dr. Paul **HATCHER**  
School of Biological Sciences, Plant Science Laboratories  
The University of Reading,  
GB-READING RG6 6AS

T + 44 118 378 8091  
F + 44 118 378 7464  
[p.e.hatcher@rdg.ac.uk](mailto:p.e.hatcher@rdg.ac.uk)

Crop / Weed Interactions

Dr. Lammert **BASTIAANS**  
Dept. Crop and Weed Ecology  
Wageningen University,  
Postbus 430  
NL-6700 AK WAGENINGEN

T + 31 317 48 4770  
F + 31 317 48 5572  
[lammert.bastiaans@wur.nl](mailto:lammert.bastiaans@wur.nl)

Education and Training

Prof. Dr. Jens Carl **STREIBIG**  
Dept. Agriculture and Ecology (Crop Science)  
Faculty of Life Sciences  
The University of Copenhagen  
Højebakkegaard Allé 13  
Room 20  
DK-2630 TAASTRUP

T + 45 35 33 34 57  
F + 45 35 33 34 78  
[jcs@life.ku.dk](mailto:jcs@life.ku.dk)

European Weed Mapping

Prof. Dr. Garifalia **ECONOMOU-ANTONAKA**  
Faculty of Crop Production Science  
Agricultural University of Athens  
Iera Odos Str.,  
G-11855 ATHENS

[economou@aua.gr](mailto:economou@aua.gr)

Germination and Early Growth

Hr. Ilse Ankjær **RASMUSSEN**  
Langagervej 23  
DK-4100 RINGSTED

T + 45 6166 0284  
[IlseA.Rasmussen@gmail.com](mailto:IlseA.Rasmussen@gmail.com)

Herbicide Resistance

Ms. Anne **THOMPSON**  
Dow AgroSciences  
Latchmore Court, Brand Street  
GB-HITCHIN, Herts, SG5 1NH

T + 44 1462 426649  
F + 44 1462 426664  
[anthompson@dow.com](mailto:anthompson@dow.com)

Invasive Plants

Mr Christian **BOHREN**  
Research Station Agroscope Changins-Wädenswil (ACW)  
P.O. Box 1012  
CH-1260 NYON 1

T + 41 22 363 44 25  
F + 41 22 363 43 94  
[christian.bohren@acw.admin.ch](mailto:christian.bohren@acw.admin.ch)

Optimisation of Herbicide Dose

Hr. Per **KUDSK**  
Dept of Integrated Pest Management  
University of Aarhus  
Forsøgsvej 1  
DK-4200 SLAGELSE

T + 45 8999 1900  
[per.kudsk@agrsci.dk](mailto:per.kudsk@agrsci.dk)

Parasitic Weeds

Dr. Maurizio **VURRO**  
Istituto di Scienze delle Produzioni Alimentari – CNR  
Via Amendola 122/O  
IT-70125 BARI

T + 39 080 5929331  
F + 39 080 5929374  
[maurizio.vurro@ispa.cnr.it](mailto:maurizio.vurro@ispa.cnr.it)

[Back to Content](#)

## EWRS Working Groups (continued)

Physical and Cultural Weed Control	Hr. Bo <b>MELANDER</b> Dept of Integrated Pest Management University of Aarhus Forsøgsvej 1 DK-4200 SLAGELSE	T + 45 8999 1900 <a href="mailto:bo.melander@agrsci.dk">bo.melander@agrsci.dk</a>
Site-Specific Weed Management	Prof. Dr. Svend <b>CHRISTENSEN</b> University of Copenhagen Faculty of Life Sciences Department of Agriculture and Ecology Højbakkegård Alle 30 DK-2630 TAASTRUP	T + 45 353 33561 M +45 3058 9614 <a href="mailto:svc@life.ku.dk">svc@life.ku.dk</a>
Weed Management Systems in Vegetables	Dr. Euro <b>PANNACCI</b> Dept. of Agricultural and Environmental Sciences University of Perugia, Borgo XX Giugno 74 IT-06121 PERUGIA	T + 39 075 585 6342 F + 39 075 585 6344 <a href="mailto:pannacci@unipg.it">pannacci@unipg.it</a>
Weeds and Biodiversity	Prof. Dr. Bärbel <b>GEROWITT</b> Insitute for Land Use University of Rostock Satower Str. 48 DE-18051 ROSTOCK	T + 49 381 498 2200 F + 49 381 498 2199 <a href="mailto:baerbel.gerowitt@uni-rostock.de">baerbel.gerowitt@uni-rostock.de</a>
Weed Management in Arid and Semi-Arid Climate	Prof. Dr. Baruch <b>RUBIN</b> Faculty of Agricultural, Food and Environmental Sciences Hebrew University of Jerusalem RH Smith Inst. Plant Sci. & Genetics I-761000 REHOVOT	T +972 8 948 9248 F +972 8 936 2083 M + 972 54 8820054 <a href="mailto:rubin@agri.huji.ac.il">rubin@agri.huji.ac.il</a>

### INSTRUCTIONS FOR CONTRIBUTORS

**Deadline for contributions to be published in the following Newsletter issue:  
1 July 2012**

#### Photographic images

It is possible to include photographic material. Please make sure that the images are taken at no less than 300 dpi otherwise the picture quality drops.

#### Questions

If you have any problems in writing or formatting your article, please do not hesitate to contact me. I'll be happy to assist you. As Technical Editor of the Newsletter, I prepare the final layout of the Newsletter prior to publishing. You can contact me by sending an E-mail to [newsletter@ewrs.org](mailto:newsletter@ewrs.org) / [moonen@sssup.it](mailto:moonen@sssup.it) or by calling me at +39 050 883567. I'm looking forward to receiving your contributions.

Camilla Moonen

### CHARGES FOR JOB ADVERTISING IN THE NEWSLETTER

- Job advertisements are free of charge for EWRS members from public research and education institutions.
- The rate for a job advertisement from private enterprises is € 100,00 page. Reductions can be negotiated with the Newsletter editor for half page adverts.
- Publication of a job advertisement on a special page of the EWRS website <http://www.ewrs.org> will be charged € 300,00 per advert.

[Back to Content](#)